

PERSONNEL MANAGEMENT SOLUTION

Our Personnel Management Solution features check-in and temperature verification capabilities. The solution can also be programmed for facial identification, with users easily added in a few short clicks. Designed to help protect the health and safety of both employees and guests by preventing anyone with a temperature from entering a facility, alarms can be added to sound when those above the temperature threshold and those without access attempt to enter.

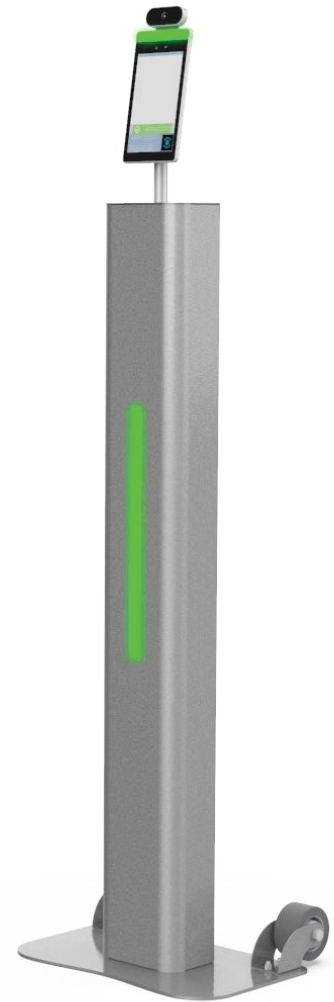
Available Configurations



Basic Pedestal



Pedestal with Optional
Battery, LED & Casters



CUSTOM SIZES AND CONFIGURATIONS AVAILABLE

- Stands Available With Antimicrobial Powder Coat Finish
- Freestanding & Countertop Options
- Digital Signage Integration
- 2 million Pixel Camera
- 2.5 W / 4R Speakers
- Supports Detection and Tracking of Multiple People at the Same Time
- Facial Recognition Library up to 30,000 People
- Temperature Accuracy $\leq \pm 0.9^{\circ}\text{F}$
- Temperature Range $50^{\circ}\text{F} \sim 107.6^{\circ}\text{F}$